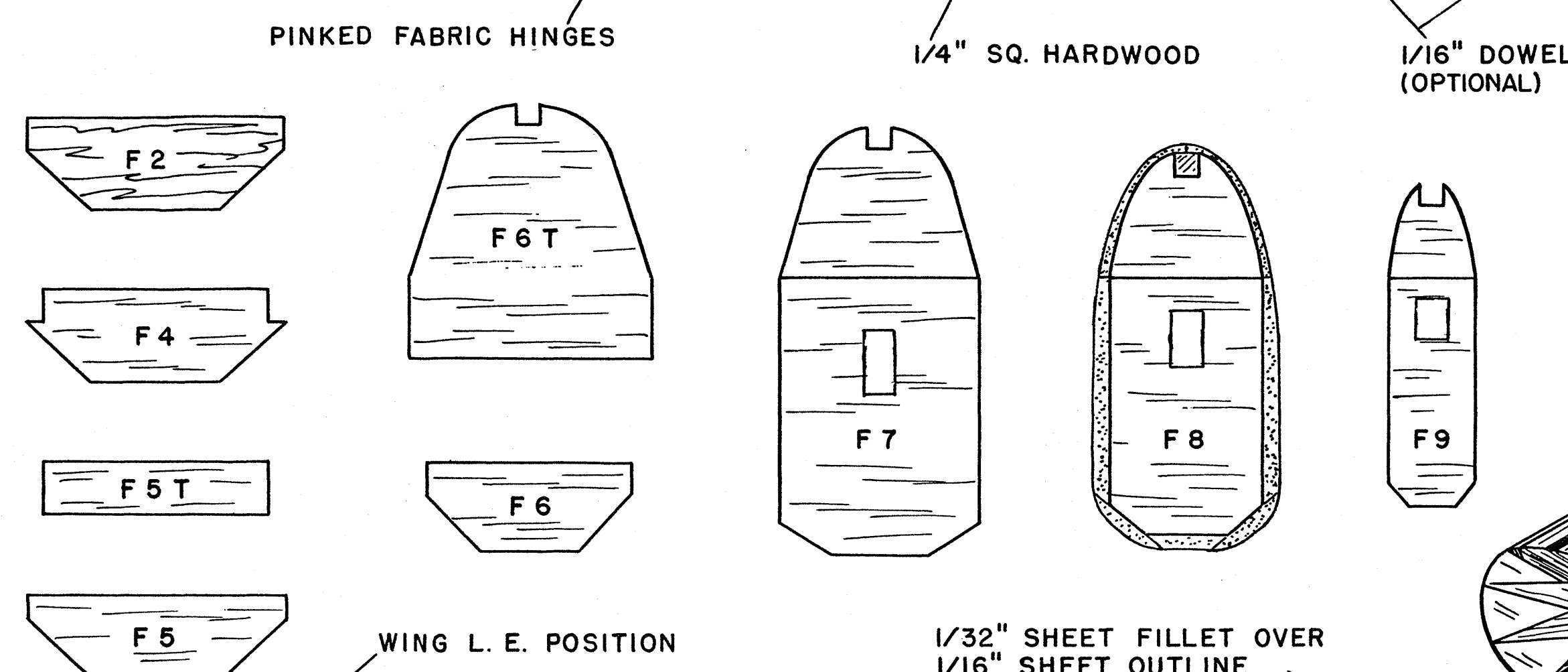
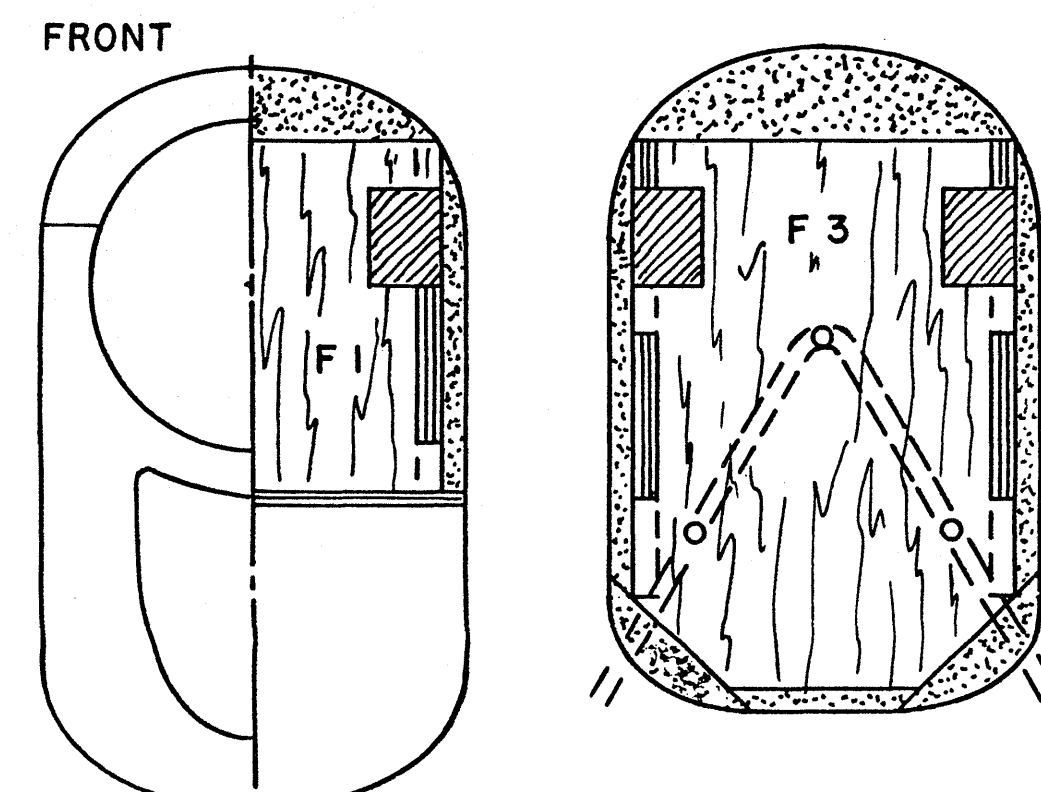
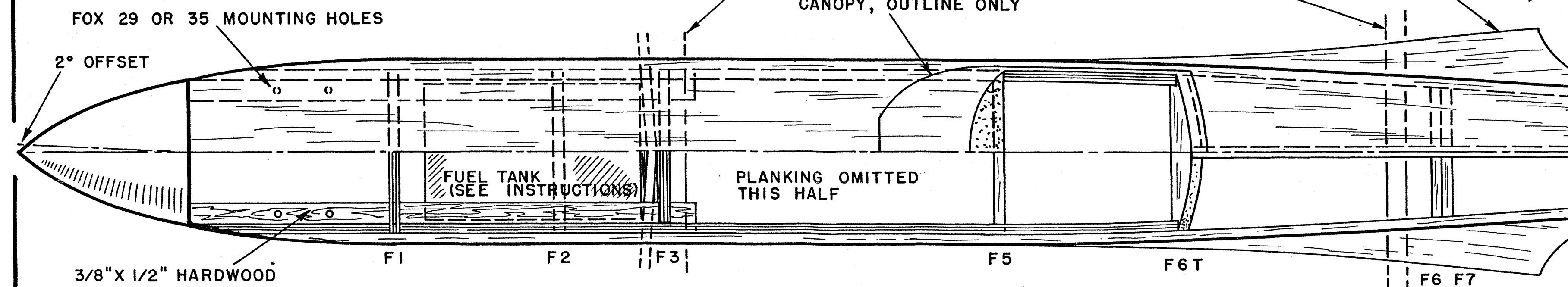
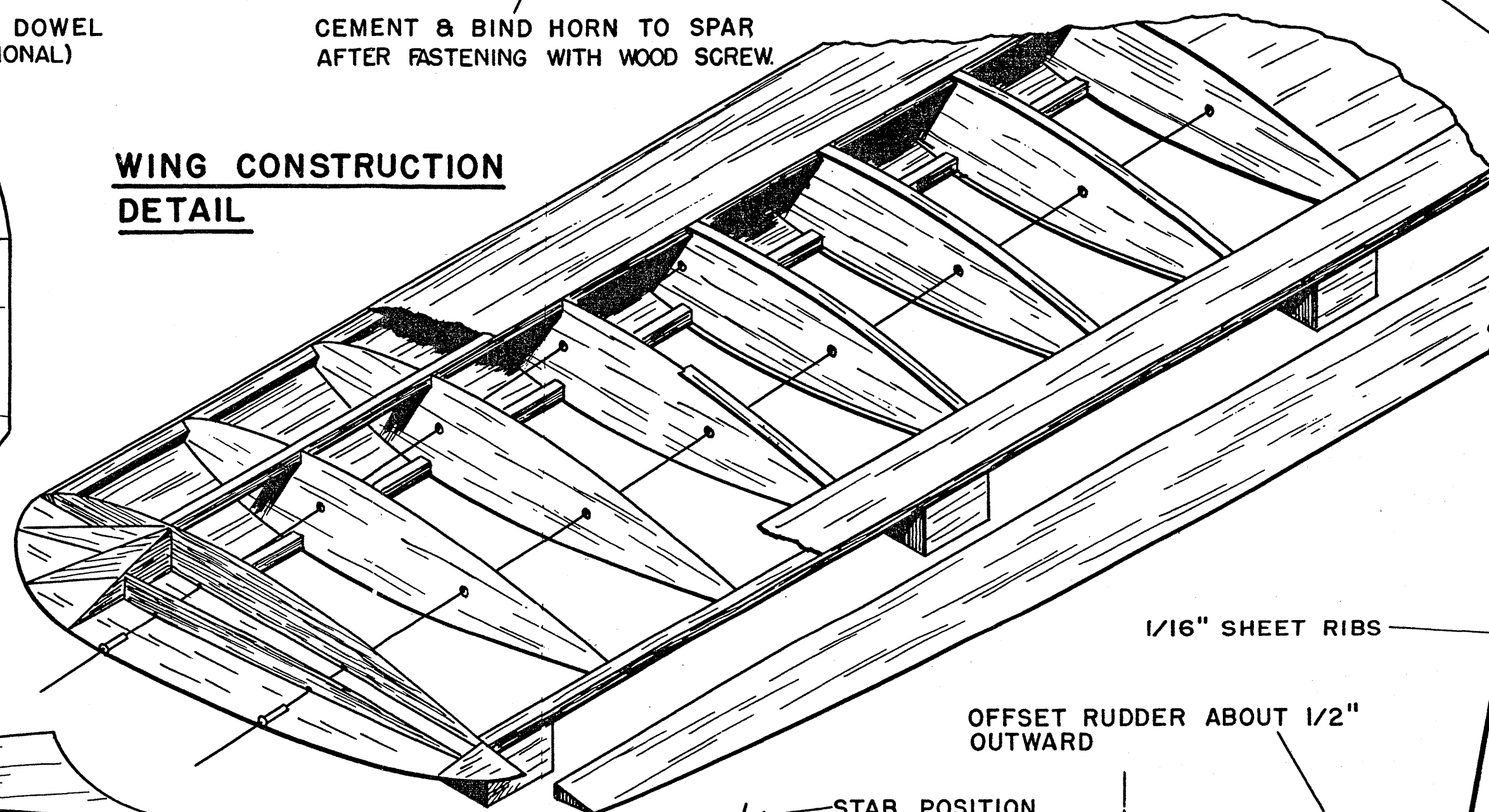


LEFT WING TOP VIEW

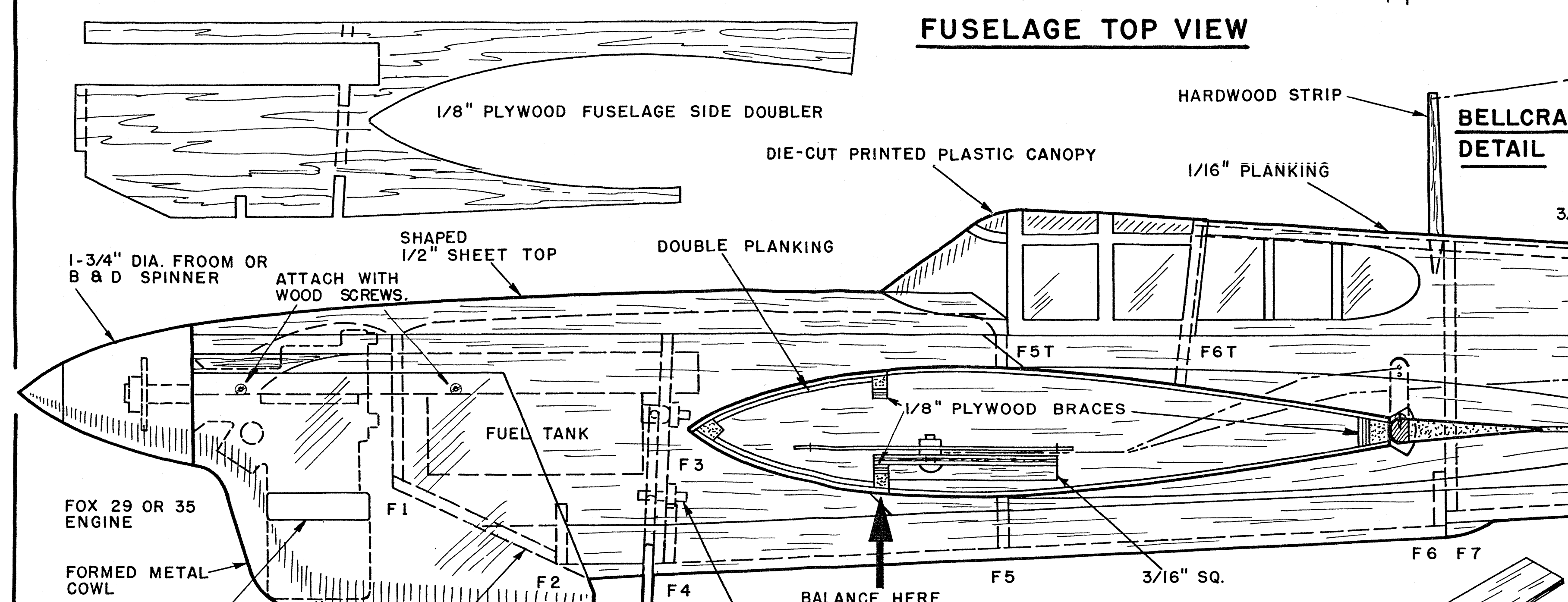
DIE-CUT FUSELAGE FORMERS F1, F2, F3 ARE 1/8" PLYWOOD ALL OTHERS 1/8" BALSA



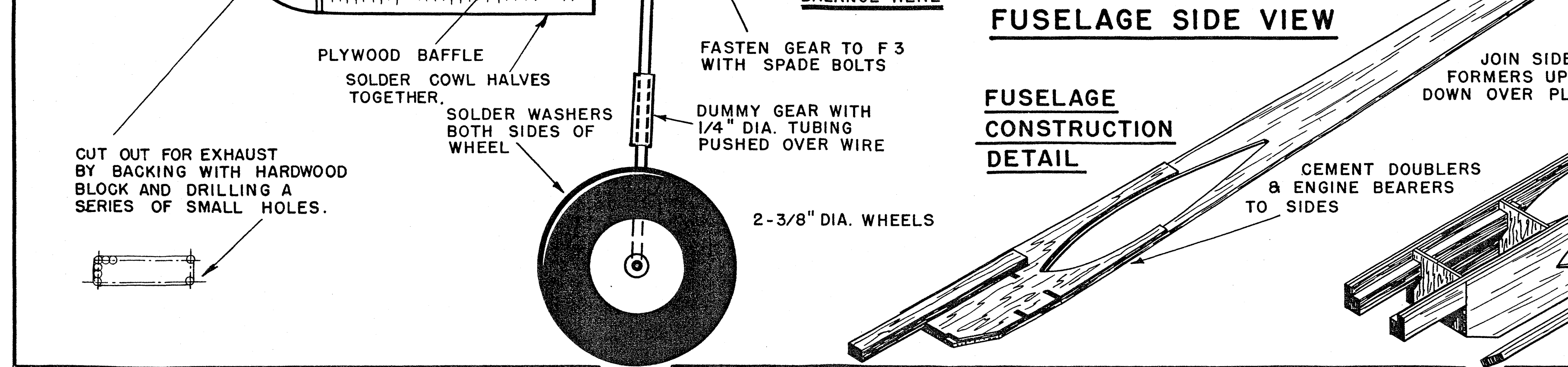
WING CONSTRUCTION DETAIL



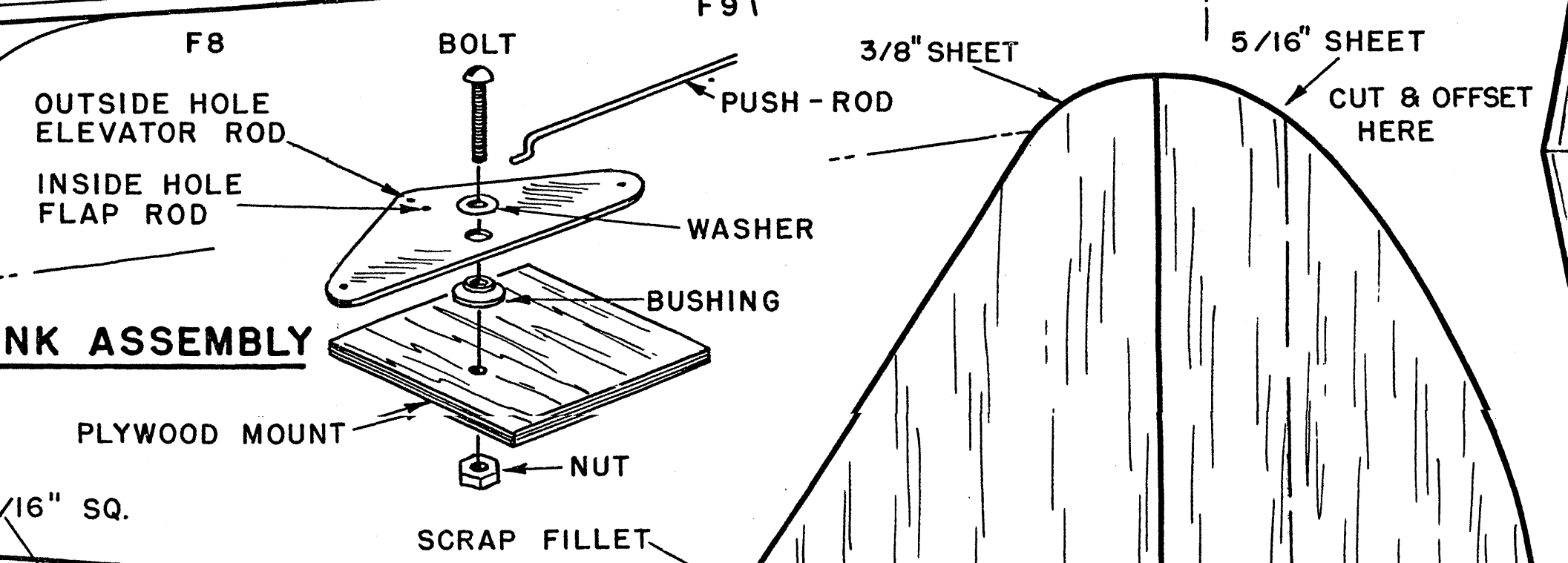
FUSELAGE TOP VIEW



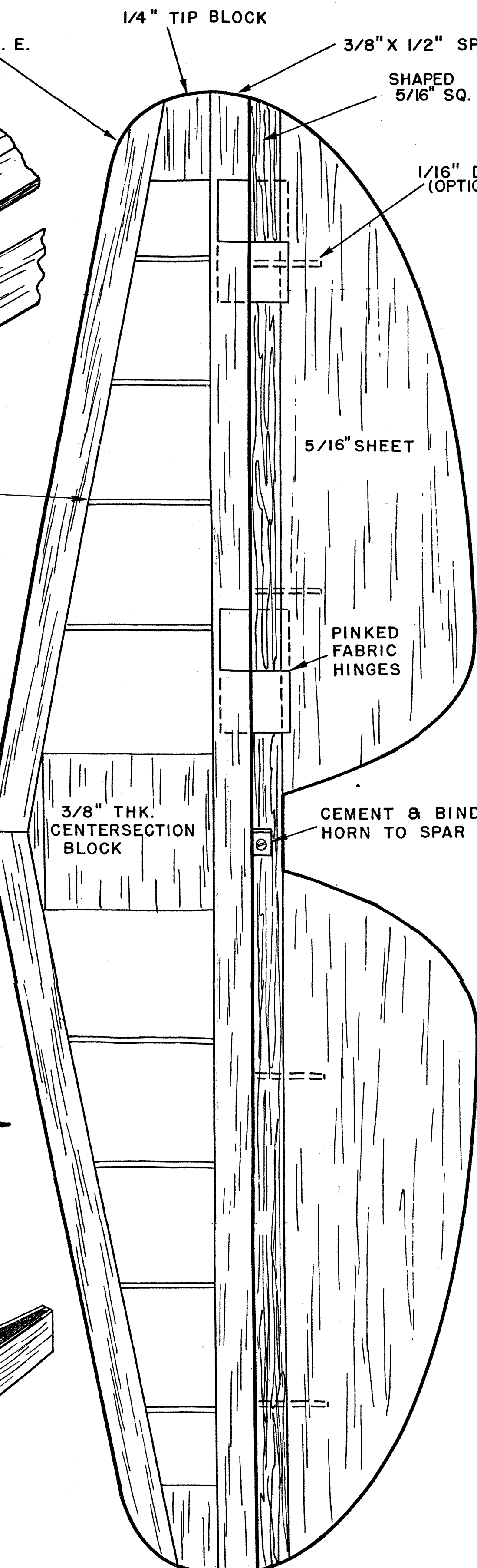
FUSELAGE SIDE VIEW



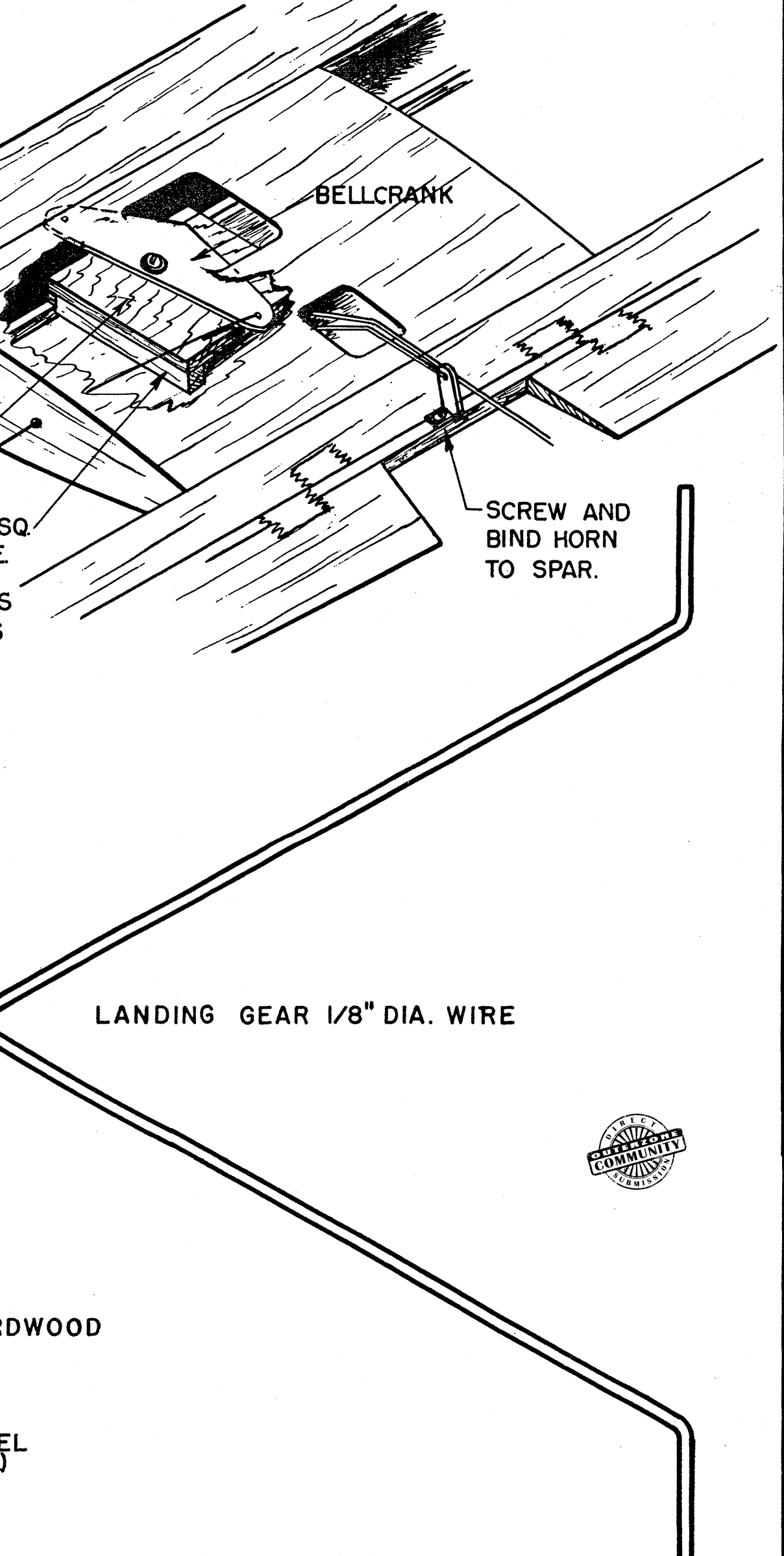
FUSELAGE CONSTRUCTION DETAIL



BELLCRANK ASSEMBLY DETAIL



STAB-ELEVATOR TOP VIEW



BUILDING AND FLYING INSTRUCTIONS

The "P-40 Warhawk" was designed to meet all the requirements of Stunt Controlline Competition and still have the realistic appeal of a scale model. This model was built from the kit requires only the simplest of model building tools. The construction is simple and should offer no difficulty, even to the beginner with only a little experience.

FUSELAGE ASSEMBLY: First the fuselage assembly by connecting the fuselage side doublers together and adding the 1/8" plywood doubler at the nose. Motor Mounts are cemented in place on the halves in the slot in the doubler. With the sides inverted, insert all the bulkheads except F1. The landing gear may be attached to the fuselage before cementing it into place, using spade bolts. If the holes do not seal up tight enough, make small pieces of felt or balsa to fill under the spade bolt and seal the hole. Cement the fuel tank in place on the fuselage. Cement the fuel tank in place on the fuselage. Cement the fuel tank in place on the fuselage. Cement the fuel tank in place on the fuselage.

WING & TAIL ASSEMBLY: The wing construction is simple. Note that the inside wing panel is 1-1/4" longer than the outside panel. The wing construction is simple. Note that the inside wing panel is 1-1/4" longer than the outside panel. The wing construction is simple. Note that the inside wing panel is 1-1/4" longer than the outside panel.

ENGINE: The 29 or 35 engine is mounted on the fuselage. The engine is mounted on the fuselage. The engine is mounted on the fuselage. The engine is mounted on the fuselage.

SEMI-SCALE STUNT "P-40 WARHAWK"

FOR .19 TO .35 ENGINES

SPECIFICATIONS

SPAN 45-1/2 IN. - WING AREA 448 SQ. IN. - WT. 32 OZ.

DESIGNED BY ROBERT W. ELLIOTT
KIT ENGINEERED BY BILL EFFINGER
DRAWN BY CAL SMITH

COPYRIGHT 1953 - REPRODUCTION FOR RESALE FORBIDDEN

BERKELEY MODELS INC.
FORT SMITH, ARKANSAS, U.S.A.