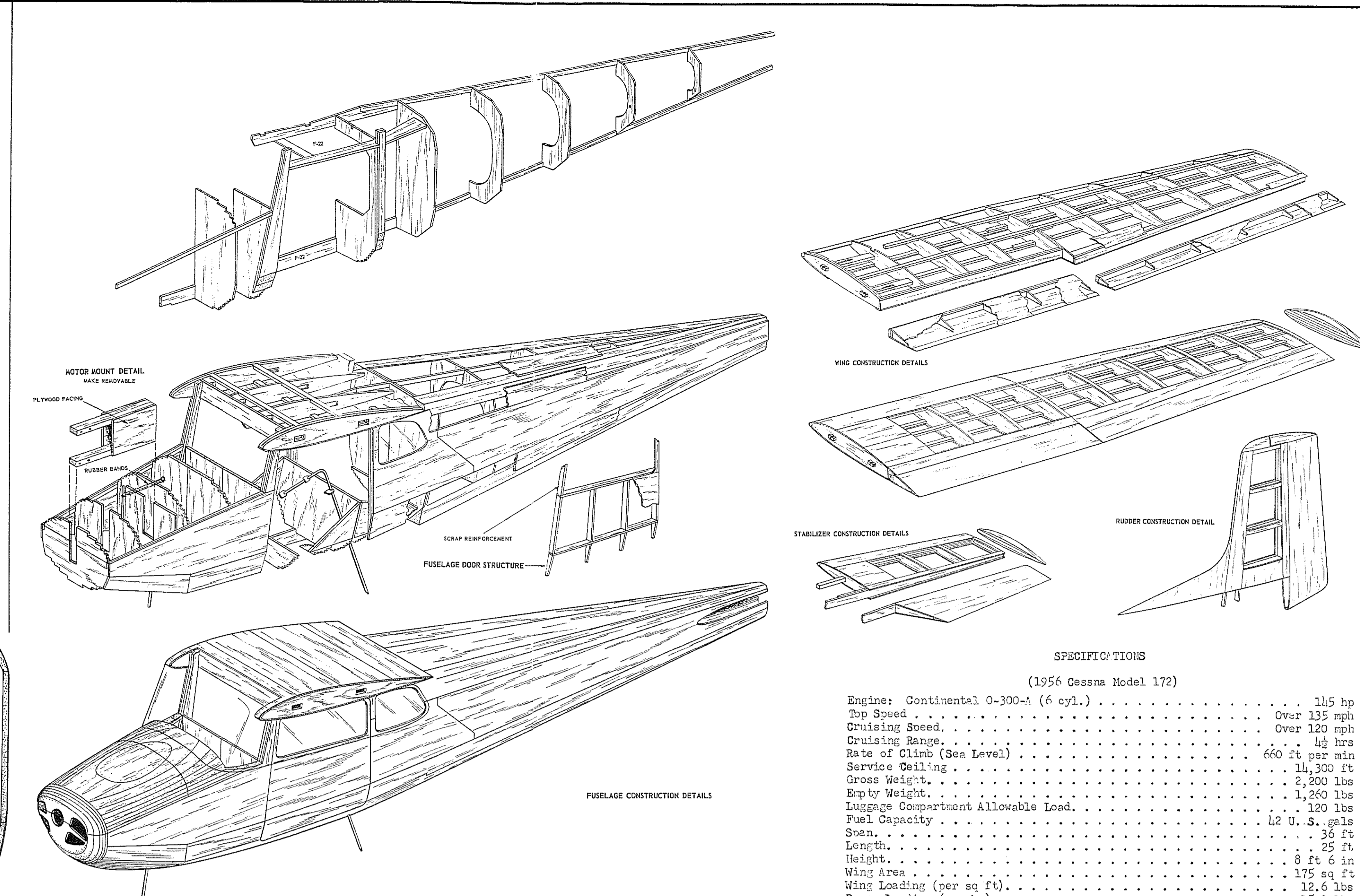
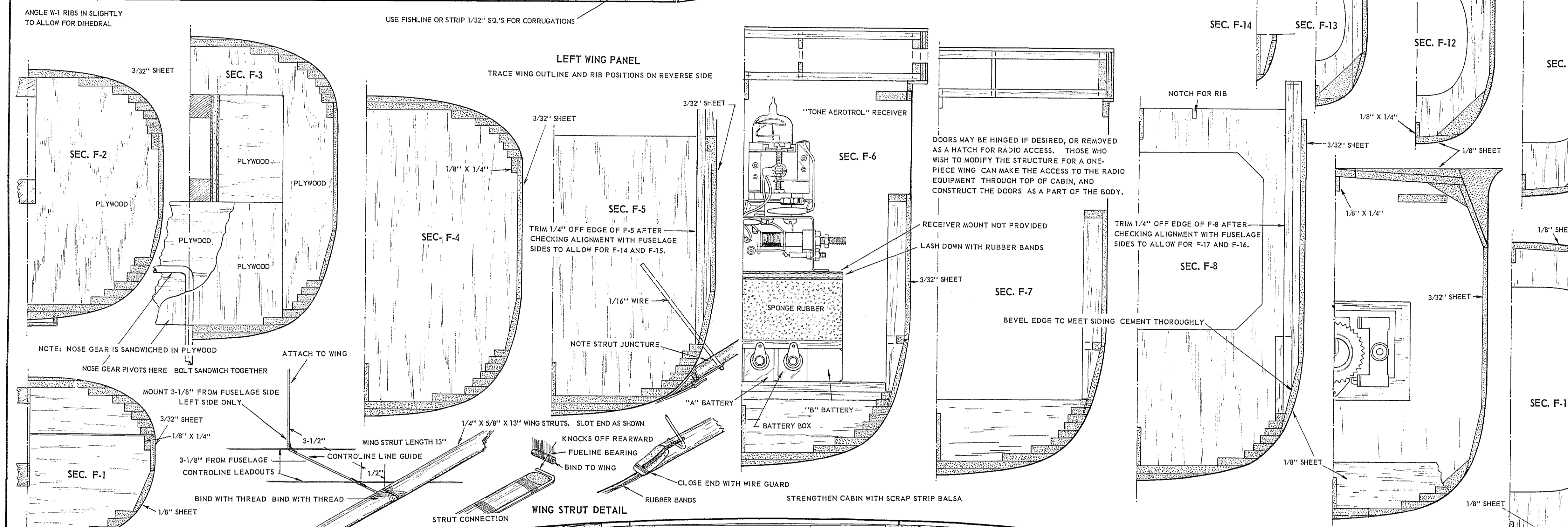
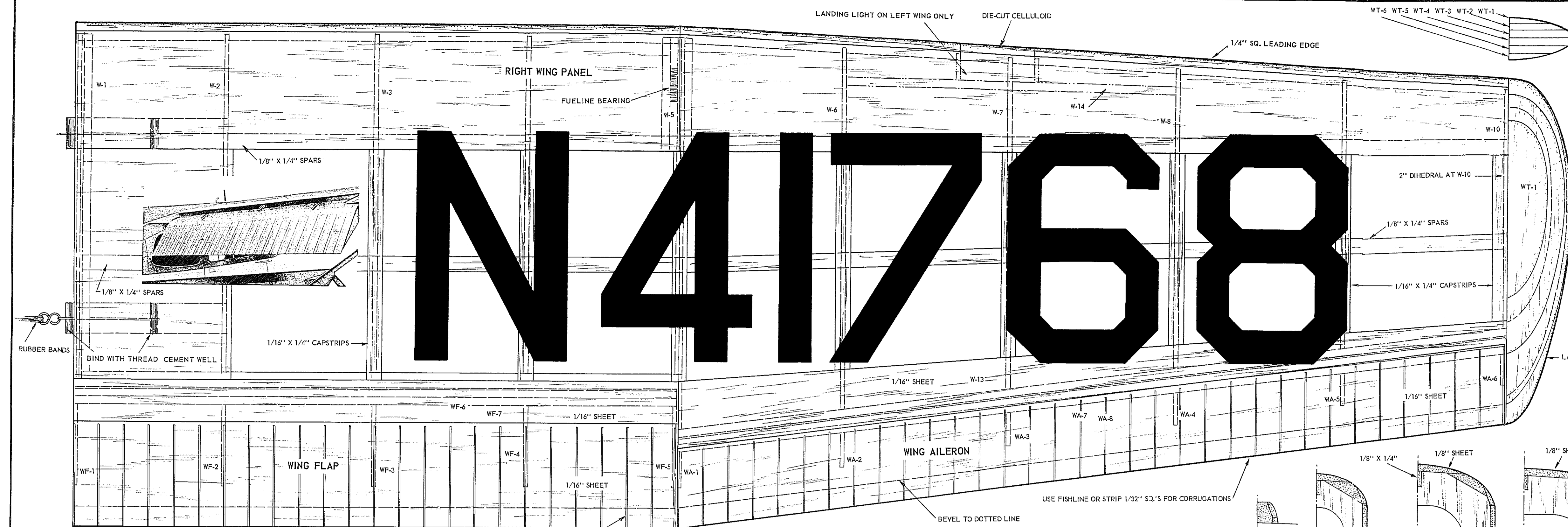


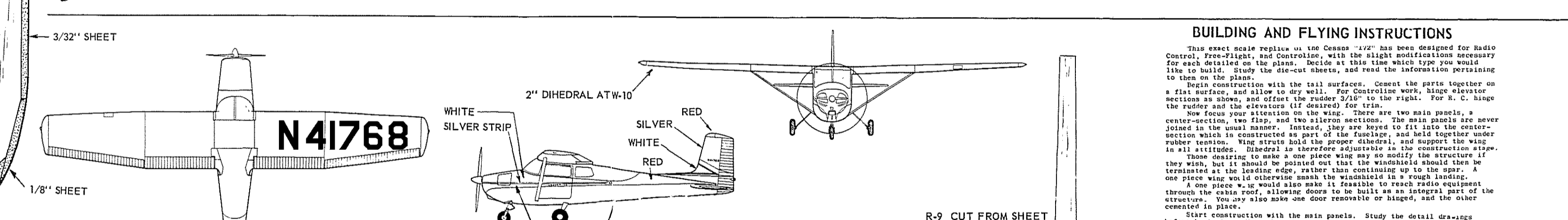
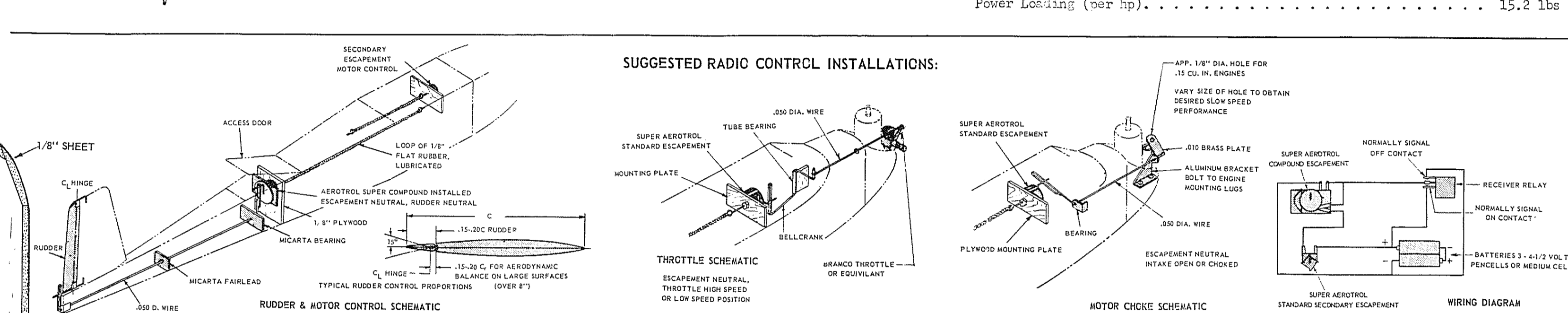
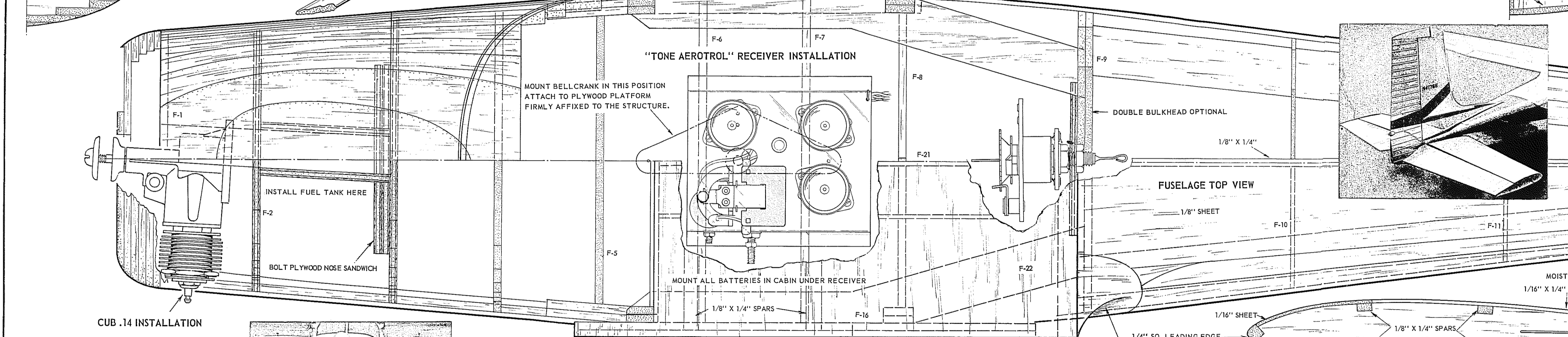
N41768



SPECIFICATIONS

(1956 Cessna Model 172)

Engine: Continental O-300-A (6 cyl.)	115 hp
Top Speed	Over 120 mph
Cruising Speed	Over 120 mph
Cruising Range	600 ft. per min.
Rate of Climb (Sea Level)	1,300 ft.
Service Ceiling	5,200 lbs.
Gross Weight	2,200 lbs.
Empty Weight	120 lbs.
Luggage Compartment Allowable Load	12 U. S. gal.
Fuel Capacity	25 ft.
Length	36 ft.
Height	6 ft. 6 in.
Wing Area	175 sq. ft.
Wing Loading (per sq. ft.)	12.6 lbs.
Power Loading (per hp)	15.2 lbs.



BUILDING AND FLYING INSTRUCTIONS

Read these instructions carefully before starting to build your model. They contain important information regarding the construction of the model and the safe operation of the engine. Failure to follow these instructions may result in damage to the model or injury to the operator.

1. Check all parts and materials for damage before starting to build. Replace any damaged parts.

2. Follow the instructions in the order given. Do not skip any steps.

3. Use the correct tools and techniques for each step.

4. Be careful when working with sharp tools and moving parts.

5. Do not fly the model near people, buildings, or power lines.

6. Always use proper landing techniques.

7. Inspect the model before each flight.

8. Do not fly in bad weather or low visibility.

9. Do not fly over populated areas.

10. Do not fly over water.

11. Do not fly over sensitive areas.

12. Do not fly over airports.

13. Do not fly over highways.

14. Do not fly over parks.

15. Do not fly over schools.

16. Do not fly over churches.

17. Do not fly over cemeteries.

18. Do not fly over hospitals.

19. Do not fly over government buildings.

20. Do not fly over military installations.

21. Do not fly over nuclear power plants.

22. Do not fly over airports with active runways.

23. Do not fly over airports with active taxiways.

24. Do not fly over airports with active parking areas.

25. Do not fly over airports with active control towers.

26. Do not fly over airports with active air traffic controllers.

27. Do not fly over airports with active pilots.

28. Do not fly over airports with active passengers.

29. Do not fly over airports with active cargo.

30. Do not fly over airports with active mail.

31. Do not fly over airports with active services.

32. Do not fly over airports with active facilities.

33. Do not fly over airports with active equipment.

34. Do not fly over airports with active supplies.

35. Do not fly over airports with active materials.

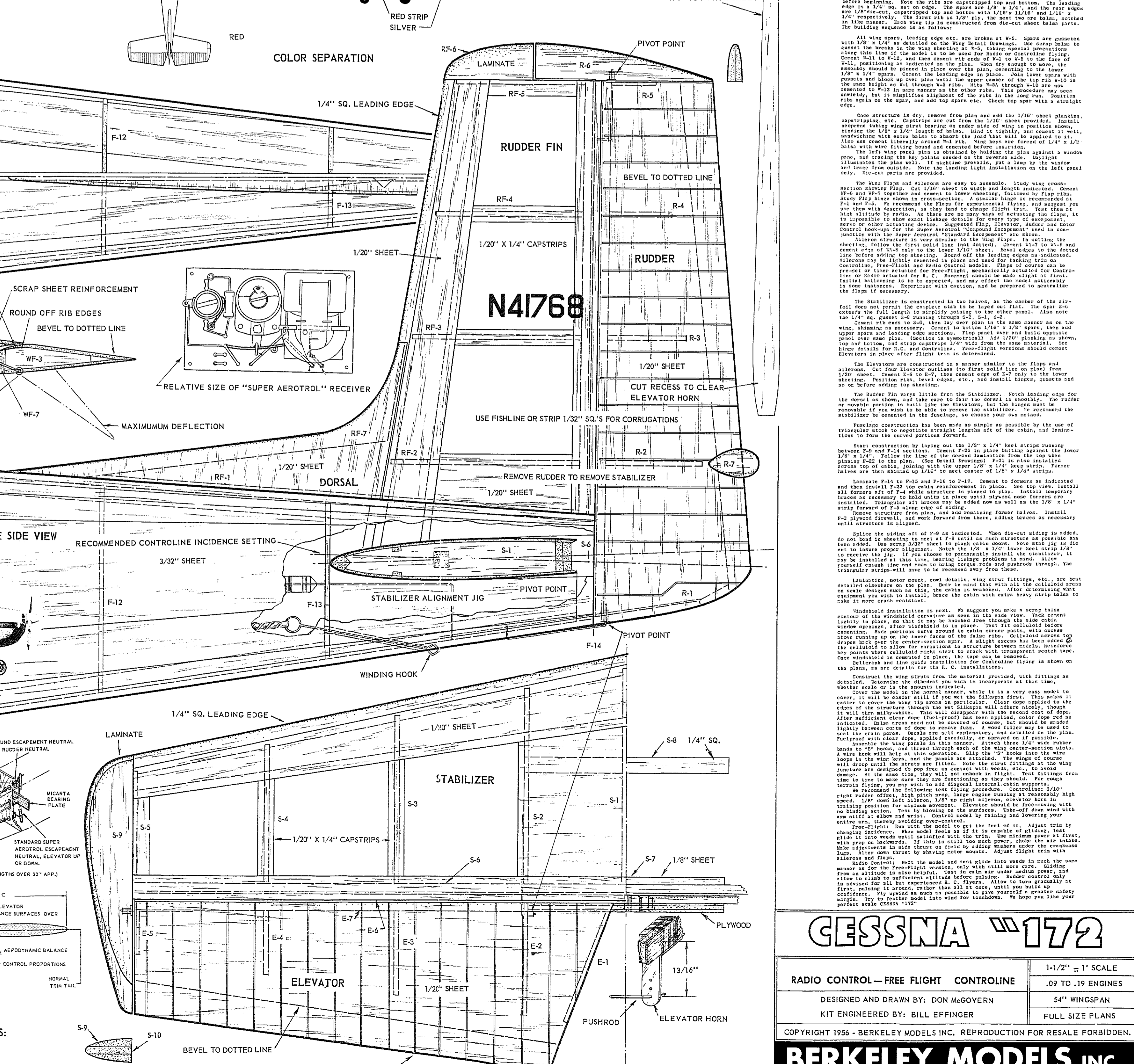
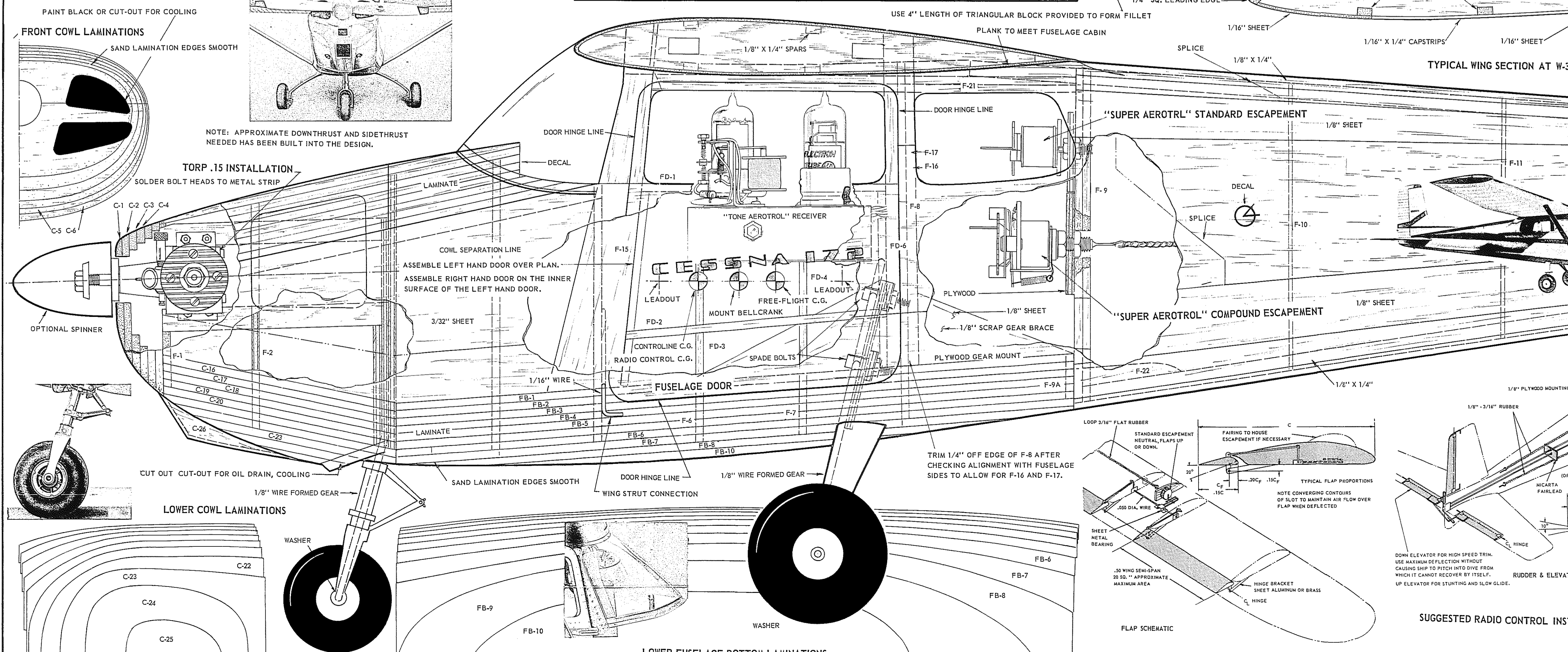
36. Do not fly over airports with active information.

37. Do not fly over airports with active communication.

38. Do not fly over airports with active transportation.

39. Do not fly over airports with active infrastructure.

40. Do not fly over airports with active services.



CESSNA "172"

RADIO CONTROL—FREE FLIGHT CONTROL LINE 1-1/2" = 1" SCALE
DESIGNED AND DRAWN BY: DON McGOVERN .69 TO .10 ENGINES
KIT ENGINEERED BY: BILL EFFINGER 54" WINGSPAN
FULL SIZE PLANS
REPRODUCTION FOR RESALE FORBIDDEN

BERKELEY MODELS INC.,

WEST HEMPSTEAD, NEW YORK, U.S.A.